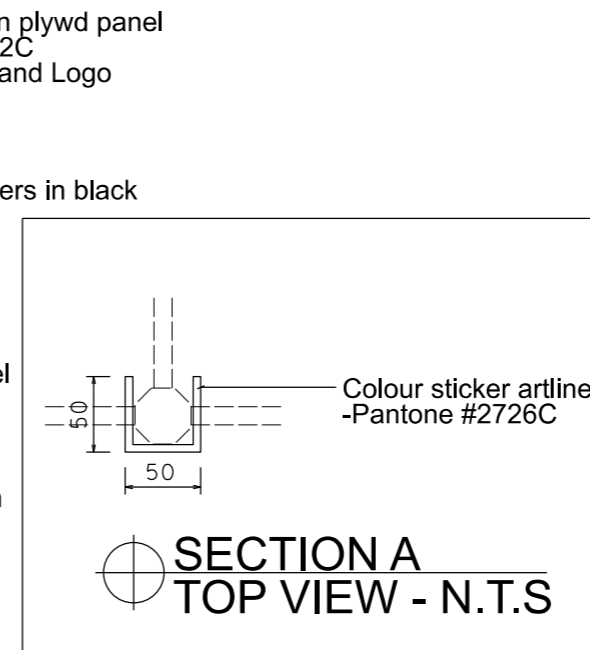
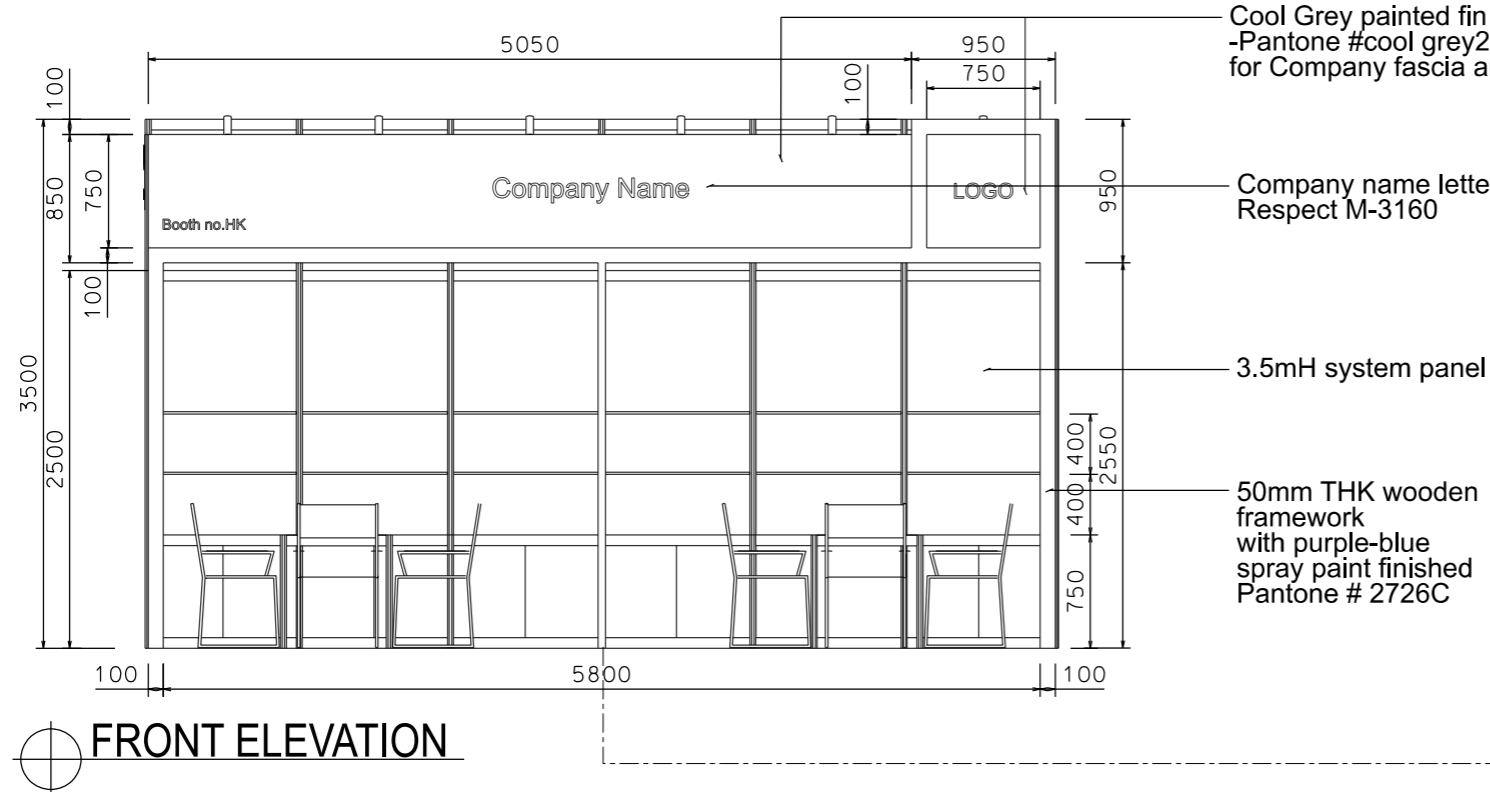
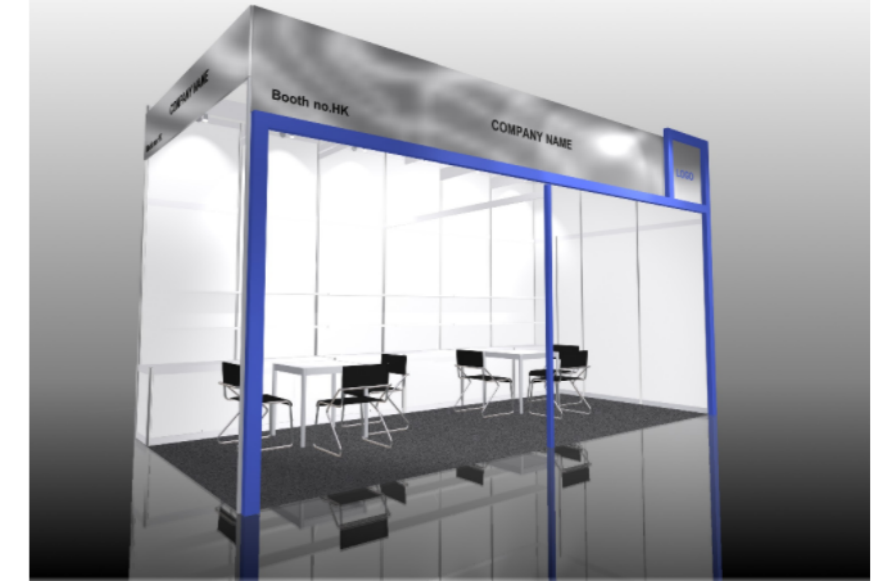
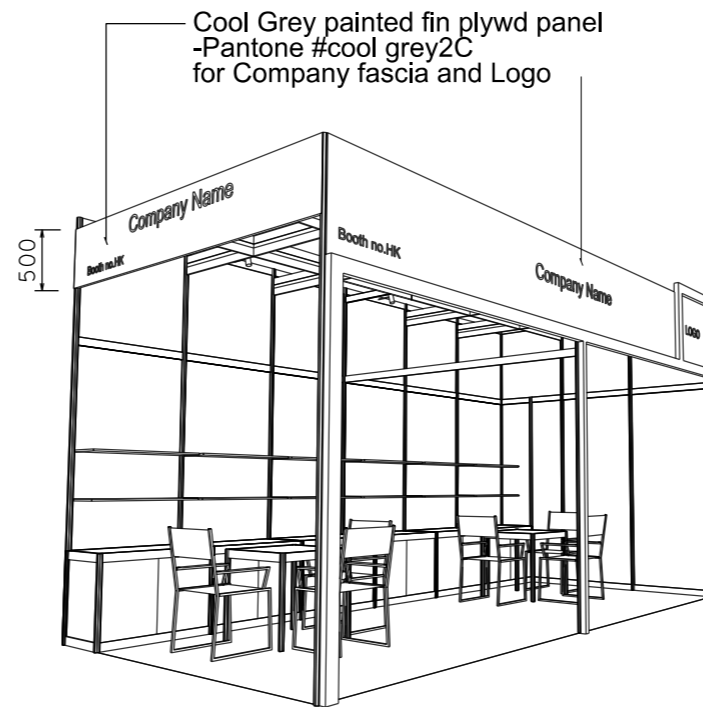
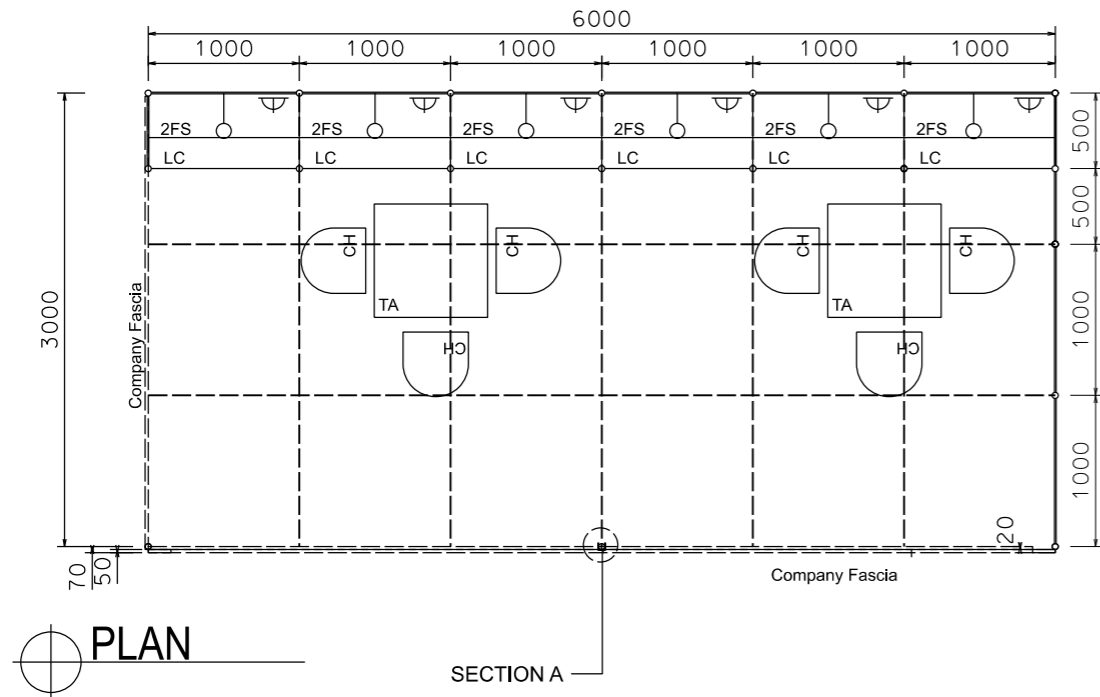


Premium Booth 6mW x 3mD Left Corner Booth

LT-A-18-L_Cnr
6mW x 3mD x 3.5mH



BOOTH SPECIFICATION		QTY
	Lockable cabinet (1mL x 0.5mD x 0.75mH)	6
	Wooden shelf (flat) (1mL x 0.3mD)	12
	Square meeting table (0.7m X0.7m x 0.75mH)	2
	Black leather chair	6
	Longarmed spotlight w/13 watt LED lamp (yellow) set at 3.5mH	6
	800w Square pin power socket	6
	Ceiling grid (175mmH) set at 3.4mH	27m

FILE PATH - L:\Local Fair Premium Booth 2011\LT\13W Lamp\LT-A layout\LT-A-2d.layout_2012.dgn



NOTES UNLESS OTHERWISE SPECIFIED ALL DIMENSIONS ARE IN MM.

.....
.....
.....

REVISION
19/10/09
23/02/2010
25/02/2010
13/12/2011
12-07-2019

DATE: 12-07-2019
SCALE: 1 : 50 (A3)
DRAWN BY: ..
CHECKED BY:

TITLE
Premium Booth
LT-A-18
L Corner

PROJECT
PREMIUM BOOTH
6m x 3m
L Corner
DATE: XXXXXXXX

SHEET
LT-A026